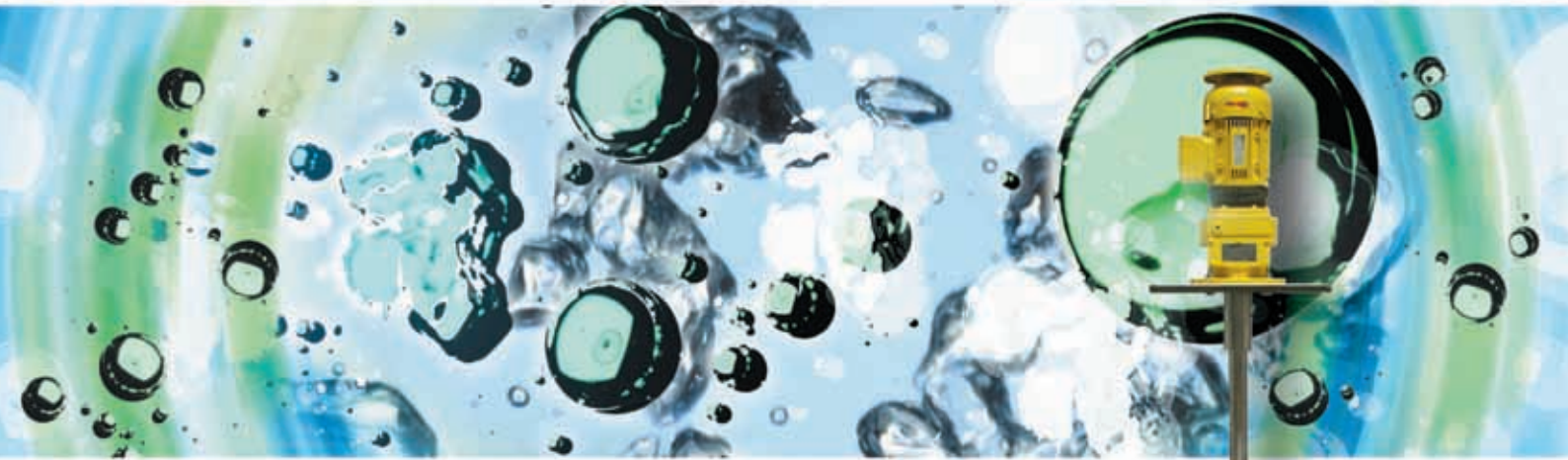


HELISEM® RANGE

FR SERIES MIXERS

Open tanks from 1 to 400 m³ – Atmospheric pressure – Temperature up to 90°C



TYPEFRF

General characteristics

- HELISEM® range, well dedicated to open tanks, is appropriate for the treatment of urban and industrial water
- Agitators type VLA, VRG and VRT, are adapted to current applications
- Types FR are exclusively reserved for flocculation
- The shape of the propeller and the very slow speed allow an optimal flocculation

Capacities

- From 1 to 400 m³ approximately

Operating conditions

- Atmospheric pressure
- Temperature up to 90°C

Composition

- 1 motor
- 1 speed reducer
- 1 shaft
- 1 blade impeller R type

Application

- Flocculation

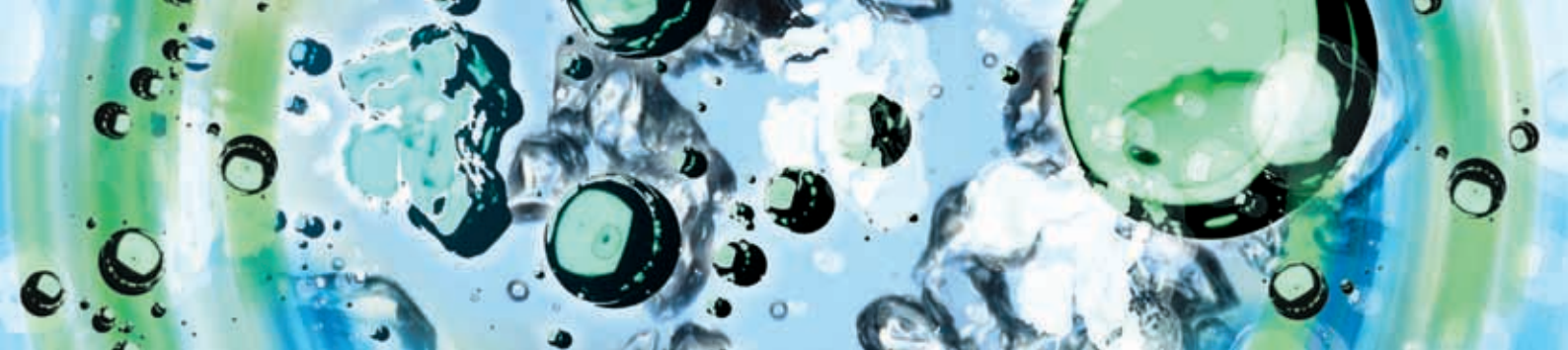
Options :

- Variable speed drive
- Base plate
- Second impeller
- ATEX mixer
- Special motors (60 Hz)

Material :

- Stainless steel 316 L
- PU painting : RAL 1018 for driving device
(other materials : contact us)



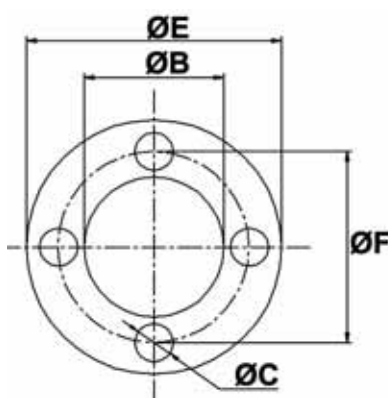


SPECIFICATIONS

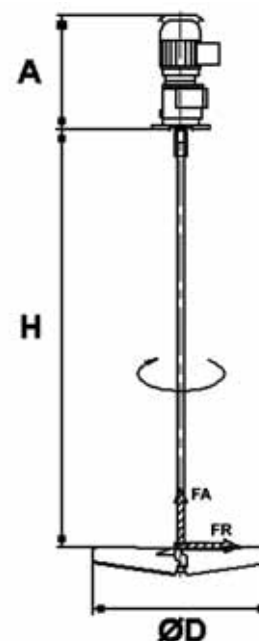
Type	Rated power (kW)	Rotation speed (rpm)	Maximum height (mm) H	Propeller Diameter (mm) D	Propeller flowrate (m³/h)	Weight (Kg)	Axial load (DaN)	Torque (DaNm)
0041S	0.37	70.3	1500	400	155	24	2	10
0051S	0.37	56.3	1500	500	240	26	3	13
0061S	0.37	49.3	1500	600	365	27	4	14
0081S	0.37	35.2	2000	800	620	42	6	20
0101S	0.37	28.7	2000	1000	1000	49	10	25
0102S	0.37	28.7	3200	1000	1000	54	10	25
0121S	0.37	23.7	2600	1200	1350	68	15	31
0141S	0.37	19.2	1800	1400	1750	61	17	38
0142S	0.37	19.2	3000	1400	1750	69	17	38
0162S	0.37	16.7	3100	1600	2360	77	22	42
0203S	0.37	14.9	4100	2000	4055	141	43	47
1252S	0.55	11	3500	2500	5900	211	57	96
2302S	0.75	9.8	4000	3000	9000	316	93	146
3362S	1.1	8	4500	3600	12750	662	131	263

DIMENSIONS (MM)

Type	A	B	E	F	C
0041S	370	110	160	130	9
0051S	370	110	160	130	9
0061S	370	110	160	130	9
0081S	370	110	160	165	11
0101S	385	130	200	165	11
0102S	385	130	200	165	11
0121S	385	180	250	215	13.5
0141S	385	180	250	215	13.5
0142S	385	180	250	215	13.5
0162S	385	180	250	215	13.5
0203S	414	180	250	215	13.5
1252S	463	230	300	265	14
2302S	522	250	350	300	18
3362S	550	250	350	300	18



Extract of the range,
please consult us
for any other request.



MILTON ROY
Mixing

MILTON ROY MIXING
10, rue du bois Gasseau BP N°94
77212 AVON Cedex
FRANCE
Tel : +33 (0) 1.60.74.95.20
Fax : +33 (0) 1.60.74.95.29
www.miltonroymixing.com



MILTON ROY

www.miltonroy.com

